

Deep Learning-Based Facial Expression Recognition in Real Time

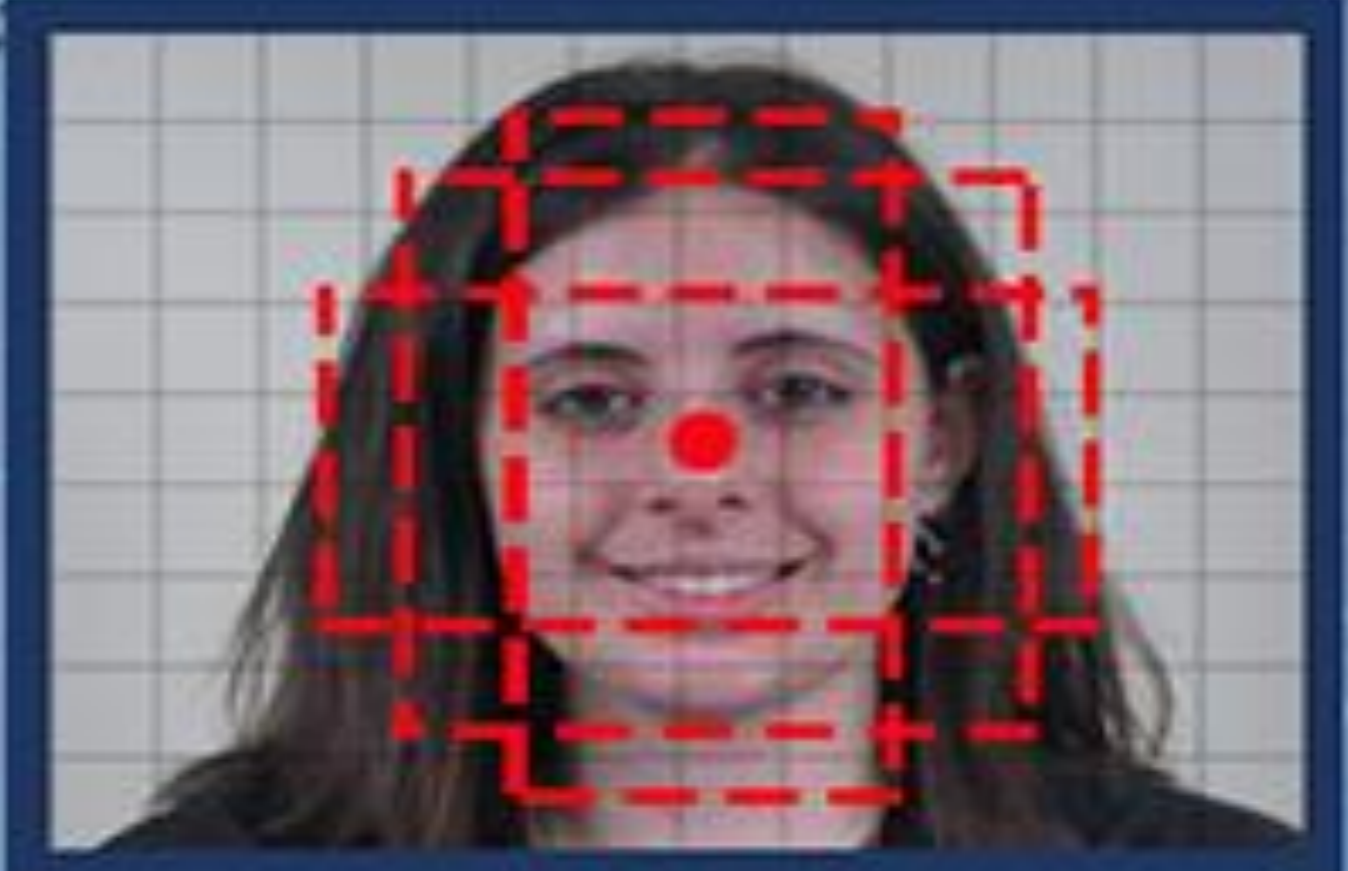
Ability to detect and recognize different facial expression of emotions in real time mobile device application that utilizes Single Shot MultiBox Detector and light weight Deep Neural Network for object detection.



input images



convolutional layers



Feature Map

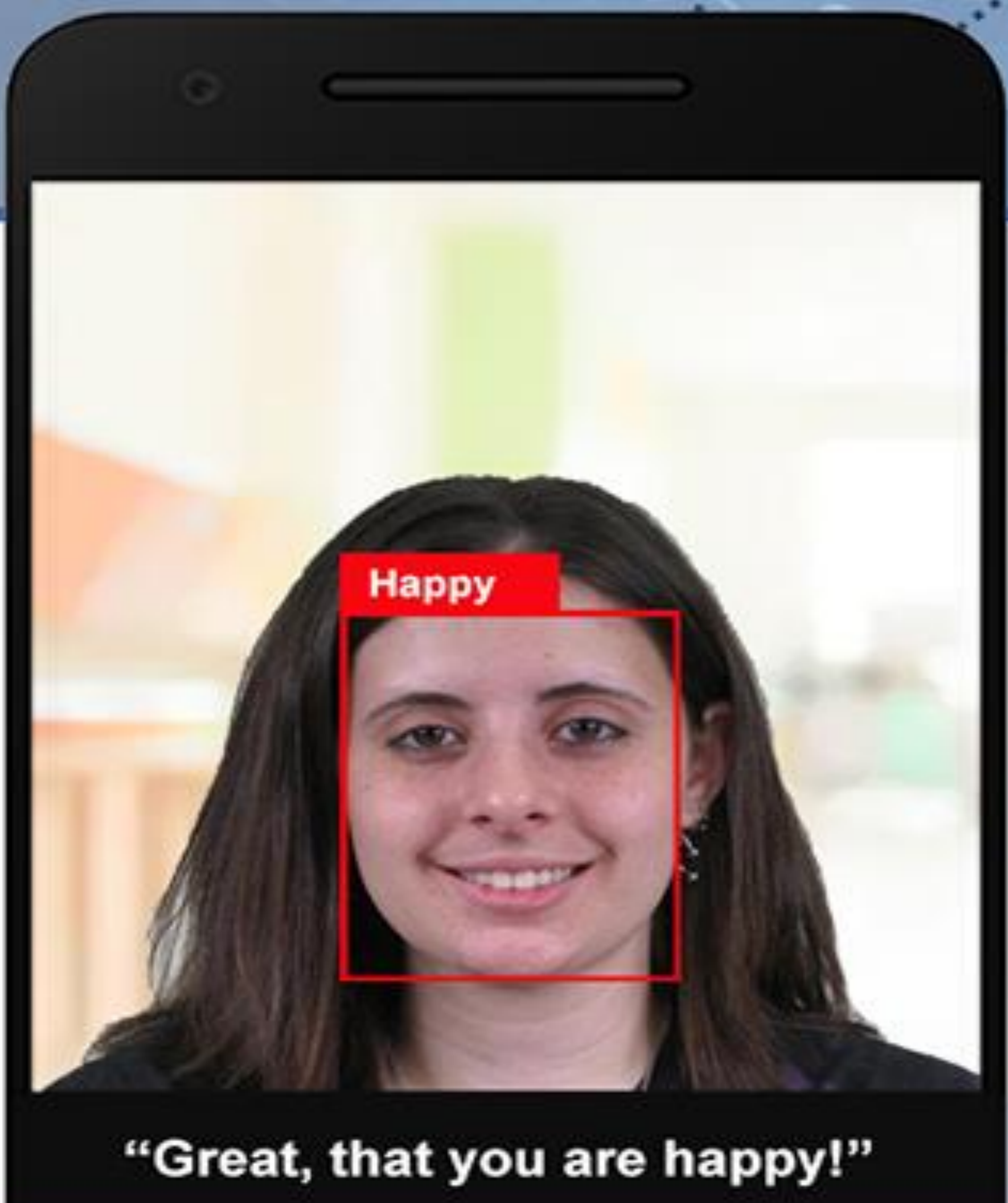


X Y W H C1 ... C7



Neutral **Happy** Fear Surprise Sad Angry Disgust

Classification and Localization



- Real time face detection and facial expression recognition.
- Designed for running on mobile platforms such as smartphones.

Student: Han Wei Jie
Supervisor: Asst Prof Lu Shijian